

July 2023 Parish Report

Framlingham – District Councillor Updates

On 10 July, Cllr Owen Grey chaired the first East Suffolk Council (ESC) Audit and Governance Committee of the new term. The meeting was an opportunity for him to scrutinise the work of the Council and Officers. He has called for swifter action on commercial rents to ensure the Council isn't overcharging local businesses and also expressed concern on the slow response to tackle asbestos in those remaining social housing units yet to be surveyed throughout East Suffolk. In September he hopes to quiz the Council's external auditors and have urged ESCDC to work hard and fill gaps in our own internal auditing capacity, to ensure every facet of the Council's work is properly scrutinised and delivers value for money.

On 14 July Cllr Grey attended the Suffolk Police and Crime Panel (where a Green chairperson was elected) and quizzed the Police and Crime Commissioner. There remain large gaps in the provision and presence of community policing, and this is something Cllr Grey will work to address with the Panel over the coming months.



Cllr Vince Langdon-Morris and ESC Cabinet Member, Resources and Value for Money.

Green Spaces: Wildflowers

Sam T has grown a patch of native flowering plants just off the Mowbrays! Well done, let's expand these lovely wildflower sites across Fram.



Castle Brooks Park: Another great year for blue tit chicks, fledged and ringed (20 this year, 75 since 2021).

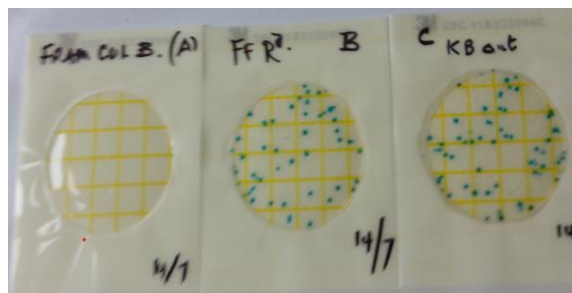


At 7:45am, on a fresh May morning, Tim (surrounded by mums, dads and excited school kids) ringed 20 chicks. The look on the children's faces was indescribable, as he expertly and safely secured lightweight rings onto tiny legs.

Our Castle Brooks information board (funded by small grants from Unitarians & Town Council) is also now up and running.

Parish news: The Fram Green and Lib Dem Councillors have worked together to attend parish council meetings and will continue to do so. We have also combined our Enabling Community budget to support PC initiatives in Parham, Brandeston, Cretingham, Monewden and Hoo 😊. Saxstead continues to host Essex & Suffolk water tankers (according to the drivers, trucked in from a covered reservoir in Carlton Colville) to top up the Dennington water tower. I'm following up to find out just why local water demand is exceeding supply?

Effluent: Our 'wee' River Ore is still being contaminated with E. Coli (see slide, blue dots are very bad) and we simply cannot keep trashing our environment like this. Slide **A** is near the Mere and clear 😊. But **B & C** are at pipe discharge points below the town and 6-7 times over the maximum limit 😞 (Wickham Market recorded 35 times over the maximum allowed 😞)



Fram Banking: After hundreds of years our last 'physical' bank closes its doors on Friday, 25th August. I've been in contact with Barclays and they have identified a 'pop-up bank' for 3 days a week near the town square (we await their announcement). Although very welcomed, this will not be for cash banking, which from now on will be from the Co-op ATM, Co-op shop/cash back and Post Office.

Housing: Stats: Suffolk Coastal Local Plan states 486 new houses to be built in Fram by 2036. By 2023 we have 480 new houses of all sizes and prices and more on the way. Few have renewable technology fitted as standard, none are zero-carbon? Average value is £377,500 and between 50-60 properties advertised in Rightmove daily (for sale and let). Dangerous sections of road are being created, most worryingly the pinch point on the rural Victoria Mill Road. Protected green spaces and agricultural land are being built over. Our towns infrastructure needs far more investment and we have received over £1 million of community infrastructure levy to do this, great. However, offset this against private developers, estimate £40-50 million profit since the 2017 Fram Neighbourhood Plan?

Katch Bus is Back!

From Richard Cooper, Chair of Transport Task and Finish Group, Framlingham, Wickham Market and Surrounding Villages Community Partnership

We all know the challenges facing those who want to use public transport in East Suffolk and the lack of available scheduled services can be a real problem, particularly for young people and older members of our rural communities. But help is at hand! East Suffolk Council recognised the need to continue Katch, the "on demand" transport service, originally launched in 2021 and the route is now up and running again with stops along the way between Framlingham and Snape via Wickham Market and Campsea Ashe (for Wickham Market station). The service runs from 7.30am to 6.30pm Monday to Friday, from 10am to 6.30pm on Saturdays, and from 10am to 6pm on bank holidays. Regular users will be able to benefit from a loyalty card, while young people will get a 25% discount by presenting an Endeavour Card (free from Suffolk County Council for 16 to 19-year-olds).

To book a seat on Katch, you can either visit www.katchlift.com or download the Flexiroute Passenger App (details on the "How it Works" page of the website) and this provides an easy way to book outside office hours. Managed by Coastal Accessible Transport Service (CATS), there is a friendly voice on the end of the phone at CATS from Monday Friday 08.30 – 4.4.30pm, just dial 01728 635 939 if you prefer to book that way. Whichever way you book, all that is needed is to indicate the time of your journey, where you want to be picked up and where you are going.... and Katch will do the rest! And remember, you can book a journey on the day you want to travel, or up to two weeks' ahead of your travel time.

Lynn Butler, manager at CATS is enthusiastic about the revitalised service and pointed out that by using the Connecting Communities transport services and linking with Katch, a wider range of destinations can be accessed. “The Katch service is quick, reliable and affordable” she said and added “we have some wonderful friendly drivers who are always willing to help their passengers.”

East Suffolk Council has committed to fund the service for a year, but it needs passenger numbers to make it viable over the longer term. People have been looking for an opportunity to revive Katch in East Suffolk – now it’s here, please support it. Help maintain the service by booking a ride on Katch!

For the most up to date information regarding East Suffolk Council, please visit:
www.eastsuffolk.gov.uk